

## Innovative Programs and Services



## Commitment to the Highest Standards of Professionalism

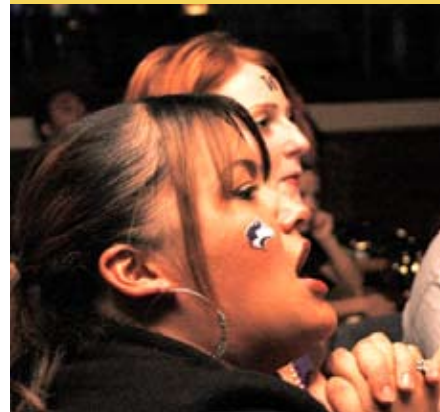
**W**ELCOME to the Division of Student Affairs at the University of Washington Tacoma. Our staff is committed to providing personalized attention to all students from the time they aspire to attend UW Tacoma until the successful completion of their degree. Student Affairs will provide the co-curricular and personal support necessary to accomplish the critical processes students must complete to achieve success.

Our Mission and Vision focus on the importance of promoting student learning and providing an out of classroom learning environment that helps each student develop a sense of belonging, identify opportunities to get involved on the campus and make positive contributions to our UW Tacoma community.

Our Values express the commitment of every member of our division to treat each student with respect, to assist them in accomplishing their goals, and teach them to be effective advocates for their own success.

At UW Tacoma, Student Affairs will prepare you to “Live Your Potential.”

Cedric B. Howard  
Associate Vice Chancellor for Student Affairs/  
Chief Student Affairs Officer



### DEPARTMENT OF STUDENT DEVELOPMENT

MAT 106  
Tel: 253.692.4421  
[www.tacoma.washington.edu/studentaffairs/SD](http://www.tacoma.washington.edu/studentaffairs/SD)

The Department of Student Development assists new students in their transition to university life; serves as a conduit for parent relations; educates students in the career development process; and provides local, regional, and national employment and internship opportunities. The department consists of the following resources:

- New Student Programs
- Family & Parent Affairs
- Career Development & Education
- Employer Relations

### DEPARTMENT OF STUDENT HEALTH & WELLNESS

MAT 203  
Tel: 253.692.4522  
TTY 253.692.4413  
[www.tacoma.washington.edu/studentaffairs/SHW](http://www.tacoma.washington.edu/studentaffairs/SHW)

The Department of Student Health & Wellness provides services and resources that support students and help them manage personal, professional, academic, emotional and physical stressors so they can succeed in their daily university endeavors. To this end, we provide the following:

- Disability Support Services
- Health Education & Promotion
- Student Counseling Services

### DEPARTMENT OF STUDENT INVOLVEMENT

MAT 103  
Tel: 253.692.4481  
[www.tacoma.washington.edu/studentaffairs/SI](http://www.tacoma.washington.edu/studentaffairs/SI)

The Department of Student Involvement enhances the academic mission of the University by providing personal attention for students as their primary resource for co-curricular involvement. We house and advise multiple organizations and programs including:

- Associated Students of UW Tacoma (ASUWT)
- Student Activities Board (SAB)
- Students in Service (AmeriCorps) & Volunteer Services
- Registered Student Organizations (RSO)

### DEPARTMENT OF STUDENT SERVICES

MAT 203  
Tel: 253.692.4802  
[www.tacoma.washington.edu/studentaffairs/SS](http://www.tacoma.washington.edu/studentaffairs/SS)

The Department of Student Services provides programs and services which support students in a variety of intentional co-curricular opportunities which allow them to fully participate in and experience the UW Tacoma campus community. We are comprised of the following:

- Childcare Assistance Program
- Judicial Affairs
- Recreation & Fitness
- Student Housing

## Holistic Development



## Relationships Informed by Respect and Integrity



DIVISIONAL ADMINISTRATION  
 MAT 203  
 Tel: 253.692.4501  
[www.tacoma.washington.edu/studentaffairs/SPA](http://www.tacoma.washington.edu/studentaffairs/SPA)

Office of the Associate Vice Chancellor - MAT 213

### Student Publications

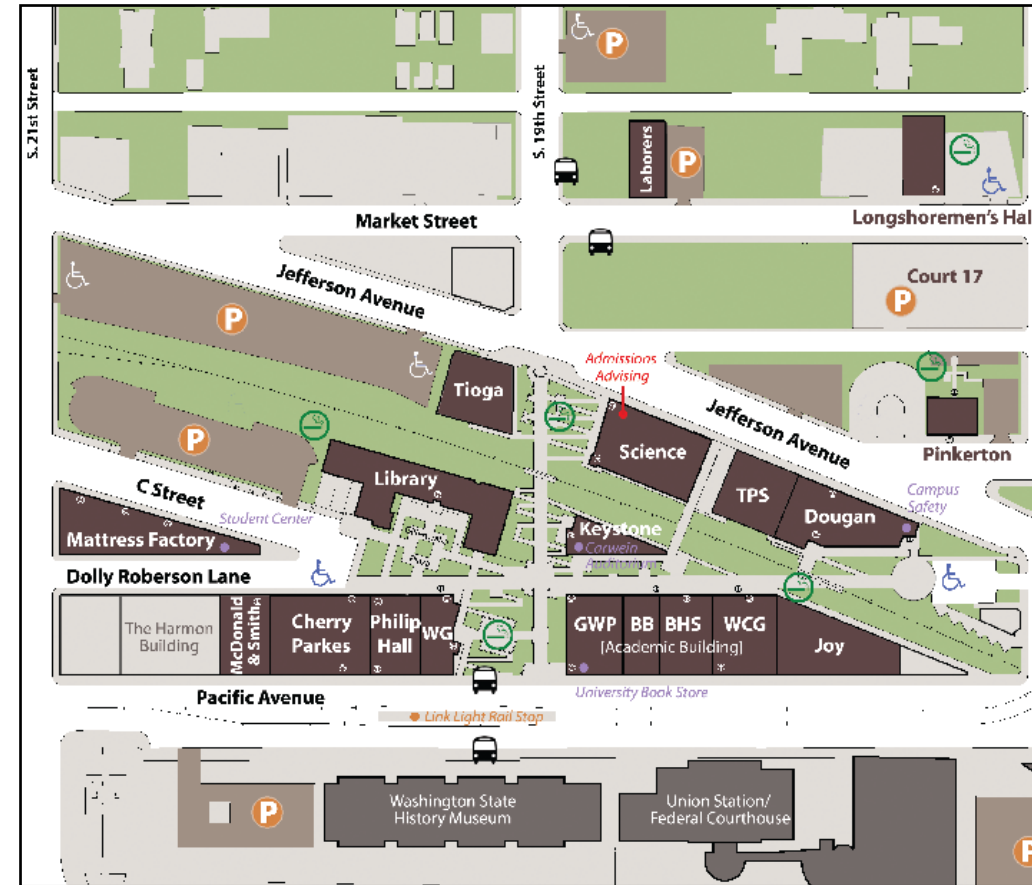
The Division of Student Affairs houses two student publications *The Ledger* student newspaper and *Tahoma West*, an award winning Literary Arts Magazine. Both entities are continuously looking for work by UW Tacoma students to publish, including articles, pictures, poems and artwork.

### Student Planning & Administration

The Department of Student Planning and Administration (SPA) serves as the central point of coordination for strategic planning, policy development, financial management, and assessment initiatives of the Division of Student Affairs.



Visit our Web site:  
[www.tacoma.washington.edu/studentaffairs](http://www.tacoma.washington.edu/studentaffairs)



The Mattress Factory (MAT), located at S. 21st & C Street, serves as a hub for Student Affairs and the Cashier.

Our mailing address:  
 Campus Box 358403, 1900 Commerce Street,  
 Tacoma, WA 98402-3100



# Live your potential.



**W** Division of Student Affairs  
 University of Washington Tacoma